

**PSG COLLEGE OF ARTS & SCIENCE  
(AUTONOMOUS)**

**MSc DEGREE EXAMINATION DECEMBER 2018  
(First Semester)**

**Branch-BOTANY**

**FOREST RESOURCE MANAGEMENT**

Time: Three Hours

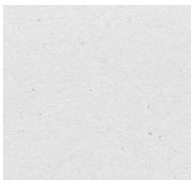
Maximum: 75 Marks

**SECTION-A (10 Marks!)**

Answer ALL questions

ALL questions carry EQUAL marks (10 x 1 = 10)

- 1 Which of the following state has got largest forest in the country?  
 (i) Madhya Pradesh (ii) Arunachal Pradesh  
 (iii) Chhattisgarh (iv) Maharashtra
- 2 Which one of the following state does not have the Tropical deciduous forests?  
 (i) Jharkhand (ii) Western Orissa  
 (iii) Chhattisgarh (iv) Rajasthan
- 3 Why most of the sun light does not penetrate to the ground in evergreen forest?  
 (i) Because of snowfall  
 (ii) Because of less temperature  
 (iii) Because of trees overlap with each others  
 (iv) Because of less rainfall
- 4 How forests increase the atmosphere's humidity?  
 (i) By transpiration (ii) By inspiration  
 (iii) By expiration (iv) By oxidation
- 5 Gum-resin are made up of  
 (i) Gums and resins  
 (ii) Gums, hard resins and fatty oils  
 (iii) Gums, mucilage and oleoresins  
 (iv) Gums, latex and oleoresins
- 6 A medicine for bronchitis is got from  
 (i) Rauwolfia serpentina (ii) Curcuma longa  
 (iii) Adhatoda vasica (iv) Hemidesmus indicus
- 7 Which of the following is an economic value of forests?  
 (i) they provide wood (ii) they regulate the water cycle  
 (iii) they prevent soil erosion (iv) they decrease flooding
- 8 Which type of forest most likely contains the greatest variety of habitats and should be conserved due to its high level of biodiversity?  
 (i) old growth forests (ii) plantations  
 (iii) even aged stands (iv) monocultures
- 9 Soil, fresh water, wild animals and timber are examples of  
 (i) renewable resources (ii) non renewable resources  
 (iii) forest resources (iv) inexhaustible resources



- 10 Deforestation has the greatest impact on biodiversity
- (i) in tropical areas and arid regions
  - (ii) on private lands
  - (iii) on public land
  - (iv) in densely populated areas

**SECTION - B (35 Marks)**

Answer **ALL** Questions

**ALL** Questions Carry **EQUAL** Marks (5 x 7 = 35)

- 11 a Discuss on evergreen forest.  
OR  
b Evaluate significance of social forest.
- 12 a How will you evaluate forest vegetation?  
OR  
b Illustrate the biotic factors.
- 13 a List out the timber products.  
OR  
b Explain the rubber and its products.
- 14 a Discuss on wedding in the forest area.  
OR  
b How will you choose the plant for pruning?
- 15 a Explain about afforestation.  
OR  
b How will you recommend plantation in various ecosystems?

**SECTION - C (30 Marks!)**

Answer any **THREE** Questions

**ALL** Questions Carry **EQUAL** Marks (3 x 10 = 30)

- 16 Elucidate IUCN red listed categories.
- 17 Determine factors influencing resource availability.
- 18 Enumerate the non timber forest products.
- 19 Differentiate natural and artificial forest regeneration.
- 20 Evaluate the sustainable forest management system.

Z-Z-Z

END