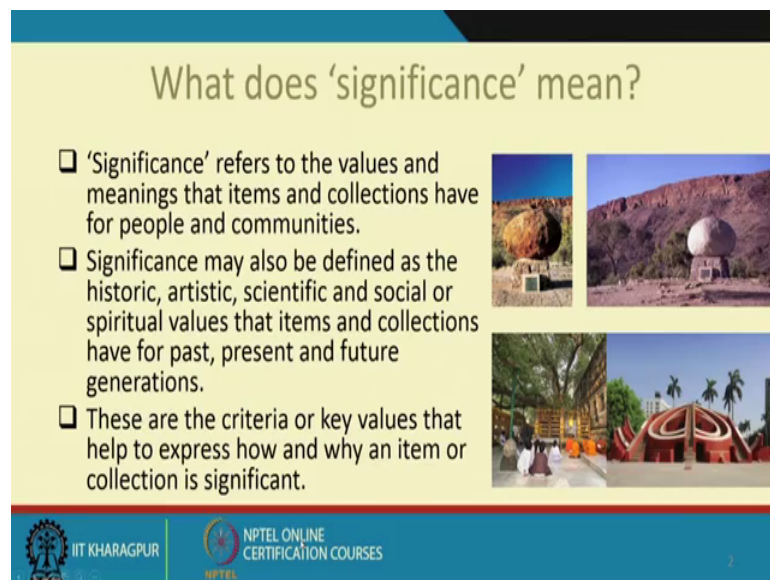


Architectural Conservation and Historic Preservation
Prof. Sanghamitra Basu
Department of Architecture and Regional Planning
Indian Institute of Technology, Kharagpur

Lecture – 08
Assessing Heritage Significance – Concept and Process

Welcome, we have been discussing the heritage significance in our last lecture we discuss about the heritage significance values and how it can understanding the heritage significance and value how it can also lead to the conflict resolution we will continue today with the significance, but the process of significance.

(Refer Slide Time: 00:40)



What does 'significance' mean?

- ❑ 'Significance' refers to the values and meanings that items and collections have for people and communities.
- ❑ Significance may also be defined as the historic, artistic, scientific and social or spiritual values that items and collections have for past, present and future generations.
- ❑ These are the criteria or key values that help to express how and why an item or collection is significant.

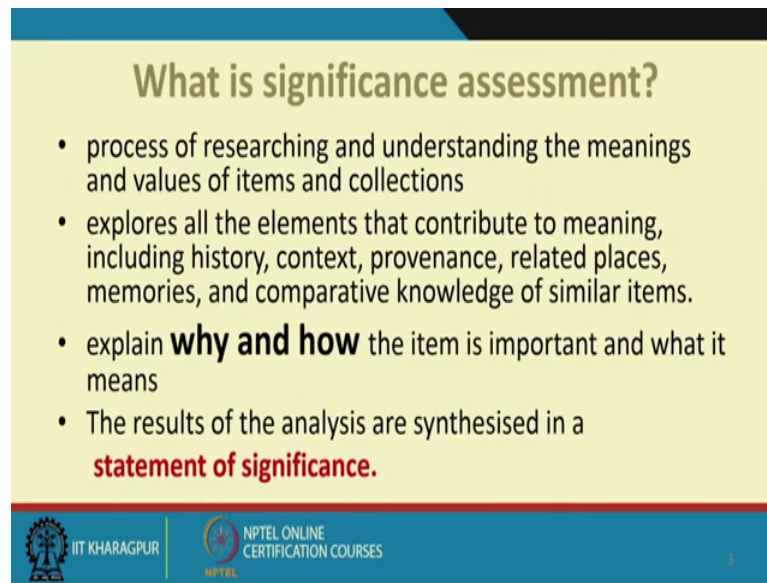
The slide includes four images: a large stone sphere on a pedestal, a stone sphere on a pedestal in a desert landscape, a modern architectural structure with a circular opening, and a modern architectural structure with a circular opening in a city setting.

IIT KHARAGPUR | NPTEL ONLINE CERTIFICATION COURSES

So, again just to have a recap what we discuss even that stone in Australia, we talked about that how understanding the values and significance lead to a proper conflict resolution between 2 groups conflicting. So, what does the significance mean significance refers to the values and meanings that items and collections have for people and communities.

Significance may also be defined as the historic artistic scientific social or spiritual values and that items and collections have for the past present and the future generations these are the criteria or the key values that help to express how and why an item or collection is significant. So, we have discussed several cases to convey the different types of values what we have told just now.

(Refer Slide Time: 01:45)



What is significance assessment?

- process of researching and understanding the meanings and values of items and collections
- explores all the elements that contribute to meaning, including history, context, provenance, related places, memories, and comparative knowledge of similar items.
- explain **why and how** the item is important and what it means
- The results of the analysis are synthesised in a **statement of significance.**

IIT KHARAGPUR | NPTEL ONLINE CERTIFICATION COURSES

So, now if we have got a good idea about that what is the significance and values we have to also understand that how do we assess the significance because again, I told you many times that the subjective; we said I liked it or it has got a value has no meaning, it has to be very objectively assessed.

So, what is the significance assessment, it is the process of researching and understanding the meanings and values of the items and collections and these items and collections can be of very types. So, it needs a proper understanding and it explores all the elements that contribute to the meaning including history context provenance related places memories and comparative knowledge of the similar item. So, let us take each of this term and we will explain that what it means in relation to some items and collection of items.

And finally, under after researching and understanding in a proper way all these various aspects of items or collection of items, it can be building, it can be a singular artifact or objects it actually the process is to explain why and how the item is important and what it means this is absolutely important because that is the objective of this research and understanding why and how and finally, the result of this analysis are synthesized in a statement of significance this statement of significance is what it is a not a score type of thing, it does not give a value in a sense of 1, 2, 3, 4 or certain score value, it is not like that, but ultimately it has to lead to a statement of significance and today, we will discuss

with several cases that what this means the statement of significance and what is the process of achieving that because that actually will lead us to that how and whether we should conserve something from the past.

(Refer Slide Time: 04:04)

Statement of Significance

Just a stump chair?

The stump chair

This is one of the most significant items in the collection, and also one of the oldest and most vulnerable to decay. It represents the foundation moment of the Catholic Church in Bendigo, the earliest European institution to operate in the area, and as such is highly historically significant. It was used at a time when the Victorian goldrush had just begun. When Backhaus first arrived there the population of Sandhurst was around 15,000, most of whom had arrived in the six months since the discovery of gold. It demonstrates the very rough and basic conditions and the humility and courage of missionary priest like Backhaus, who were determined to bring word of God to the people in the most remote and rugged areas. Even though it is not one, this

From the Significance Assessment for the Catholic Diocese of Sandhurst, Bendigo by Dr Megan Cardenaro 2012.

An example of a significance statement.

This is one of the most significant items in the collection, and also one of the oldest and most vulnerable to decay. It represents the foundation moment of the Catholic Church in Bendigo, the earliest European institution to operate in the area, and as is highly historically significant. It was used at when the Victorian goldrush had just begun. When Backhaus first arrived there the population of Sandhurst was around 15,000, most of whom had arrived in the six months since the discovery of gold. It demonstrates the very rough and basic conditions and humility and courage of missionary priest like Backhaus, who were determined to bring word of God to the people in the most remote and rugged areas.

IIT KHARAGPUR | NPTEL ONLINE CERTIFICATION COURSES

Now, just to take an example of this here, this is from Australia, this is just a stump chair, it looks like a made out of a wooden block and this is an example which we will talk about that what is the significance of this and how that is expressed in a type of statement. I will just read out this part that what is written there because it is not very legible. So, how the what is the statement saying this is one of the most significant items in the collection and also one of the oldest and most vulnerable to decay it represents the foundation moment of the catholic church in Bendigo, a place in Australia; the earliest European institution to operate in that area.

So, this is an institution in a particular area where the settlement started of the white Europeans in Australia and as is highly historically significant. So, it is historically significant because this is a place where the it is related to the catholic church in Bendigo, it is used at when the Victorian Goldrush had just begun if know the in the history of Australia there was a Goldrush. So, lot of immigrants were there; lot of convicts were brought down there and then there was a Goldrush for which a lot of changes happen.

So, when a backhouse first arrived there in the population of the sandhurst which is a place was population was around fifteen thousand most of whom had arrived in the 6 month, since the discovery of the gold it demonstrates the very rough and basic conditions and humility and courage of missionary priests like backhouse who were determined to bring word of god to the people in the most remote and the rugged areas. So, this is what is a significant in that it is talk about who are the people who are the institution where did happen what time it happened and what are the various events not in a very very elaborate way, but very precisely and very comprehensively it talks about. So, this is the statement of significance.

(Refer Slide Time: 06:24)

The significance assessment process

Introducing the significance assessment process

- Significance assessment is the process of researching and understanding the meanings and values of items and collections.
- There are **three variations** of the process for assessing significance:
 - i. for single items;
 - ii. for a collection or parts of a collection;
 - iii. for cross-collection projects

Significance assessment variations

A
Single item

B
Collection, or specific themes or parts of a collection

C
Cross-collection projects i.e. thematic studies, regional surveys, collections mapping

IIT KHARAGPUR | NPTEL ONLINE CERTIFICATION COURSES

So, the significance of assessment; that means, there is a process. So, we will now discuss what is the how the introducing the significance assessment process. So, significant assessment is the process of researching and understanding the meaning on values of items and collection this I have already mentioned. So, there are 3 variations of the process of assessing the significance, let us see what are the 3 variations one possibility the first possibility is it can be for single items the second it can be for collection or parts of a collection third for cross collection of the projects.

So, as you can see that it makes a sort of a pyramid. So, at the top we see a single item and then we see a collection of specific themes or part of a collection. So, it can be a part of a collection or it can be thematic piece or see the cross collection project that is the

thematic studies or it can be the regional service or it can be the collections mapping. So, let us take one by one and we will try to see that what these 3 variations mean for the process of significant assessment.

(Refer Slide Time: 07:48)

The slide is titled "The significance assessment process for single items". It features two side-by-side photographs of the Didarganj Yakshi sculpture. Below the photos is the text "Didarganj Yakshi , Patna museum". To the right, there is a diagram titled "Significance assessment variations" showing a large triangle with a smaller green triangle inside it labeled "A Single Item". The slide also includes logos for IIT KHARAGPUR and NPTEL ONLINE CERTIFICATION COURSES at the bottom, and a small video inset of a woman in the bottom right corner.

Let us take this example this is a very famous piece of sculpture which is known as Didarganj Yakshi in the Patna museum; look at it; it is made out of a symbols piece of marble stone and almost more than 6 feet high and it was discovered by chance in a place called Didarganj and that is why it is known as the Didarganj.

There is a controversy about to what time historically it belongs to, but most of the people say its during the Oregon types, it is a beautiful sculpture with all the details of force of the clothe the drapery the ornaments and other is almost a and sort of not damage at all in this beautiful piece of object and this is almost a remarkable piece in the Patna museum. So, this is an example of a single item for which the assessment and can be done.

(Refer Slide Time: 08:52)

The significance assessment process
for single items

Significance assessment variations

A
Single Item

Dalmadal Canon, Bishnupur ,
West Bengal

IIT KHARAGPUR | NPTEL ONLINE
CERTIFICATION COURSES

Another example can be the; it is a canon, it is in Bishnupur; the Dalmadal canon, it has its now positioned in the near the terracotta temples of Bishnupur, it has also got a historical significance because it sort of helped the kingdom there to win the battles and to protect them it is a very lot of historical significance this piece of weapon or which is placed there and the. So, this is again an example of when we are talking about the single object.

(Refer Slide Time: 09:30)

The significance assessment process
for single items

Significance assessment variations

A
Single Item

Shyamali , Santiniketan ,
West Bengal

IIT KHARAGPUR | NPTEL ONLINE
CERTIFICATION COURSES

If you talk about a building we talked about Shyamali; earlier in Santiniketan which is also can be a single building in a larger complex which also we have discussed earlier in earlier lectures that why it is important it is important because it is a adobe structure which Rabindranath Tagore experiment with he lived there and Gandhiji also came and made him and stayed there for some times, it is a very important structure.

So, these are some of the examples it can be a sculpture it can be a manuscript it can be an art object it can be a sort of like we have seen the canon it can be any type of a weapon or it can be a small structure also. So, these are example or the single items.

(Refer Slide Time: 10:18)

The slide is titled "The significance assessment process for a collection or parts of a collection". It features a pyramid diagram with two levels. Level A is labeled "A Single Item" and is colored green. Level B is labeled "B Collection; or specific themes or parts of a collection" and is colored red. To the left of the pyramid are four images: a large terracotta temple structure, a terracotta relief with an inscription, a terracotta sculpture of a face, and a terracotta sculpture of a figure. Below the images, the text reads "Rash Mancha, Shyamsundarpur, East Medinipur, West Bengal". The slide also includes the IIT Kharagpur logo and the NPTEL Online Certification Courses logo.

Let us talk about when we are talking about the second variation for collection or parts of a collection, we will talk about a temple a very unknown temple is not an (Refer Time: 10:30) state placed project is an unlisted project temple in Medinipur district which is the Rash Mancha, this is the Rash Mancha in a place called Shyamsundarpur in East Medinipur in West Bengal.

Now, when we are talking about this small structure they are very very parts are the parts of which are is a terracotta temple which are very important and its comprised the significance of that temple not only the temple is important or the Rash Mancha; the structure is important, but all these various part for example, if you see this part this is a sort of the inner terracotta the inscription is there which talks about the date when it was

done who did it and it is an in its really staying in a undamaged condition and its very important piece not only aesthetically, but historically because it is a piece of document.

In addition, there are lot of other if you can see the terracotta a morals are there and the tiles are there with a lot of stories and myths written, but in addition to that there is some sort of a sculptures are there which are there and you can see the influence like it is on the top of the Rash Mancha is almost here and it has got a strong European influence you can see the heart it is of course, damaged by different types of moss and fungus this also has been damaged it is a very strong European influence and it is a very surprising that in the far away place in a village that how this influence came and got sort of imprinted in the design of this terracotta tiles of course, this is again damaged by human the man you know the people come visit and they sometimes cause some damage to the structure, but still it is quite beautiful.

Also another part is that this is within the Rash Mancha because there is a small wooden sort of a structure which can revolt because it is for the celebration and the idols of Krishna is to be brought there and it is to be rotated and there are many many other things. So, this is a kellick an example where a collection or powers of a collection are significant to denote the significance or contribute to the significance of this small structure which is a Rash Mancha.

(Refer Slide Time: 13:03)

The slide is titled "The significance assessment process for a collection or parts of a collection". On the left, there is a photograph of the "VECHAAR UTENSIL MUSEUM" in Ahmedabad, showing various terracotta and metal utensils displayed on shelves. Below the main photo are two smaller images: one of a red plate and another of a brown pot. The right side of the slide features a diagram titled "Significance assessment variations" which is a triangle divided into two sections. The top section, labeled "A", is green and represents a "Single item". The bottom section, labeled "B", is red and represents a "Collection; or specific themes or parts of a collection". At the bottom of the slide, there are logos for "IIT KHARAGPUR" and "NPTEL ONLINE CERTIFICATION COURSES". The page number "10" is visible in the bottom right corner.

We can see various types of that like this is the Vechaar utensil museum in Ahmedabad which is a utensil museum and where the utensils of different types different material different time period are stored there. So, the significance of these museums are contributed by the different types of artifact. So, it is the collection of all these different types which contribute significance of this museum. So, each and every one of this piece of item is very significant. So, this is the second variation where collection of specific themes and here the theme is the utensil. So, the collection of the various themes various objects contributed in the theme contributes to the significance of this museum.

(Refer Slide Time: 13:47)

The slide is titled "The significance assessment process for a collection or parts of a collection". It features a pyramid diagram with two levels: Level A (Single Item) and Level B (Collection, or specific themes or parts of a collection). The slide also includes three photographs: a museum entrance, a museum interior with a vintage car, and a large white building. The text "Uttarayan, Santiniketan, West Bengal" is displayed below the photographs. The slide footer contains the logos for IIT Kharagpur and NPTEL ONLINE CERTIFICATION COURSES, along with a small video inset of a woman in a pink shirt.

Let us talk about again going back to Santiniketan Uttarayan, Santiniketan, West Bengal which is in the same complex as we have seen, this is Shyameli in the complex of Santiniketan where Rabindranath Tagore had a lot of structures where he stayed and they are in that complex. So, now, if you talk about only this building which is the Uttarayan, then what we can see is that in that there are many many things which itself they are independently individually are very important and contribute to the significance of this building the building itself is very important because of its architecture style and other.

So, what we can see here we can see the interior the living room which has actually marked a change of the conscious design which was brought by Rabindranath that time and they are trying to evolve a type of design which is taking from the traditional ethos of the Indian architecture and also the contemporary living style and. So, these very very

low story and the color combination the design items and other. This is a car which was used by them and the car is kept there and this is also has a historic significance then there is a an entrance door which is strongly influenced by the Japanese architecture and there are details of also very influenced by the in traditional Indian architecture, there are the copies of the murals. So, each and every item of that the furniture the curtains the drapery the car the design of the gates each and every item and also the garden they all contribute to the significance of that.

So, it is an very good example for a collection of parts of collection the second type where we can see that it is when we see them in together and also independently they contribute to the significance of that.

(Refer Slide Time: 15:53)

The slide is titled "The significance assessment process for cross-collection projects". It features a pyramid diagram illustrating "Significance assessment variations" with three levels: Level A (Single item), Level B (Collection or specific themes or parts of a collection), and Level C (Cross-collection projects i.e. thematic studies, regional surveys, collections mapping). To the left of the pyramid is a map of Kerala with a red dot indicating the location of the Muziris Heritage Project. Below the map, the text reads: "Muziris Heritage Project monuments, archaeological sites and the very landscape that illustrates a significant era in the history of Kerala". The slide footer includes the logos for IIT KHARAGPUR and NPTEL ONLINE CERTIFICATION COURSES, along with the NPTEL logo and the number 17.

So, this is the second type of variation the third one is that when for cross collection projects the significant assessment. So, cross collection projects that is the thematic studies regional service or collection mapping taken an example which is Muziris heritage project this is locate in Kerala, near Kochi and this is now becoming a very important part because this is the part where the traders from all over the world the maritime traders used to come and settle there.

Arabs, Chinese and even from faraway countries like Greeks and Rome and they used to come there and settle; so, there are the trade linkages and there are many many archaeological excavation which have been carried out and which signifies the linkage

the maritime linkage and the trade linkage of this place and this is a cross cultural things which happened there. So, there are many types many monuments their archaeological sites and the very landscape that illustrates a significant error in the history of Kerala. So, it is spread in a regional type and a very many times and which its all of them contribute along with the built heritage the artifacts the natural heritage the archaeological sites all of them contribute to signify the Muziris heritage of that time.

(Refer Slide Time: 17:17)

Muziris Heritage Project

The significance assessment process for cross-collection projects

Significance assessment variations

A
Single Item

B
Collection or specific themes or parts of a collection

C
Cross-collection projects i.e. thematic studies, regional surveys, collections mapping

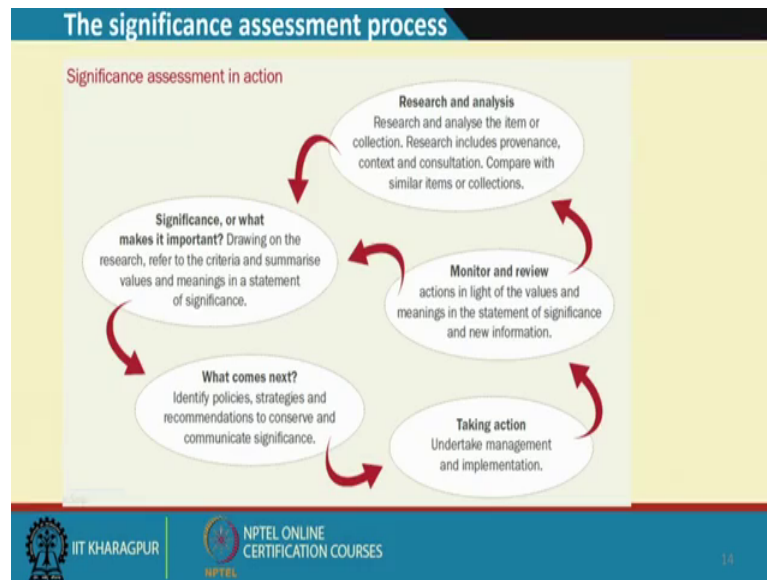
Abdul Rahman Sahib Museum
Islamic History Museum
The Paravur Jewish Synagogue Museum

IIT KHARAGPUR | NPTEL ONLINE CERTIFICATION COURSES

For example there are the churches there are which are now converted into museums there are the different buildings they have a very strong Kerala it influence, but also there is a cross cultural manifestation influence of manifestation there is a synagogue the Jewish came there as a trade and settled there. So, like this one is the Abdul Rahman Sahib museum; the Islamic history museum.

They are now converted into museum and the Paravur Jewish synagogue museum all are there and they are spread in a region along with the water body and the natural landscape and the different types of community there places of worship their architectures type all of them contribute to a cross collection projects because this shows how the different religions and different culture from faraway places and they also have found the roman coins and other they sort of contributed to the made of the Muziris style. So, this is an example of the cross collection projects based on thematic studies or regional service or the collections mapping.

(Refer Slide Time: 18:31)



So, if you see the process and if you just try to sum up. So, what are the different stages. So, first stage as we can see in this process is a research and analysis the research and analysis the item or collection as we have seen it can be single object research includes provenance context and consultation compared with similar items or collections these leads to this research and analysis leads to the significance or what makes it important drawing on the research referred to the criteria and summarize the values and meanings in a statement of significance.

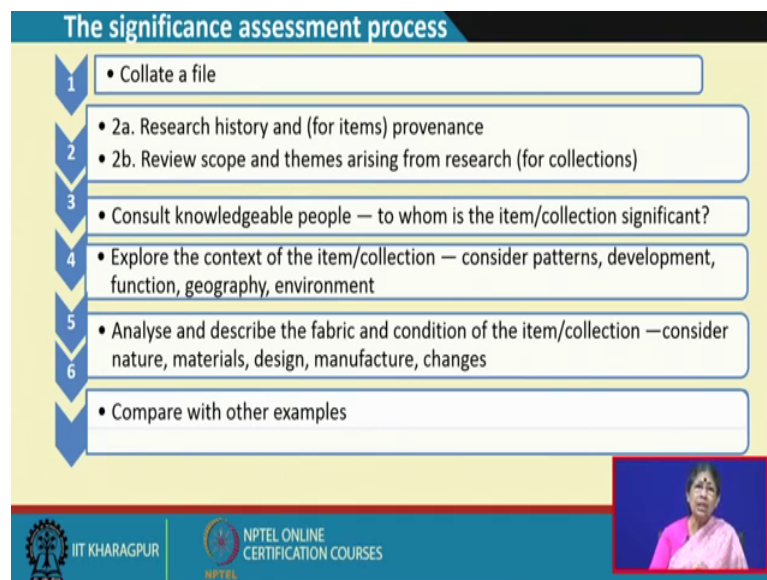
Then what comes next based on this statement of significance, we have to identify the policies strategies and recommendations to conserve and communicate the significance because it is not enough to know the significance, but you have to communicate and it has to be manifestation in some strategy and policy for conservation. So, based on that taking action undertake management and implementation. So, you see that this statement of significance leads to that what we are going above how what we are going to do about these things which have significant and for what.

Then after this is implemented also then we have to monitor because it is a continuously evolve evolving process it is not a static process. So, it is a very dynamic process. So, monitor and review actions in the light of the values and meanings in the statement of significance and new information because gradually when new sites that is caveated or new information is achieved. So, the information go on building up and we can sort of

have to change our interpretation of the site likely that there will be some changes new information coming up and other.

Now, this again will go to the go back to the significance because if some new site is excavated as we can see in New York that the Viking village was excavated there and it contributed to a more understanding of that. So, it goes on and we have to understand this dynamic nature of the significance and it again will go back to the research analysis. So, this is very important to understand that; what is the process of significance and what it leads to.

(Refer Slide Time: 20:59)

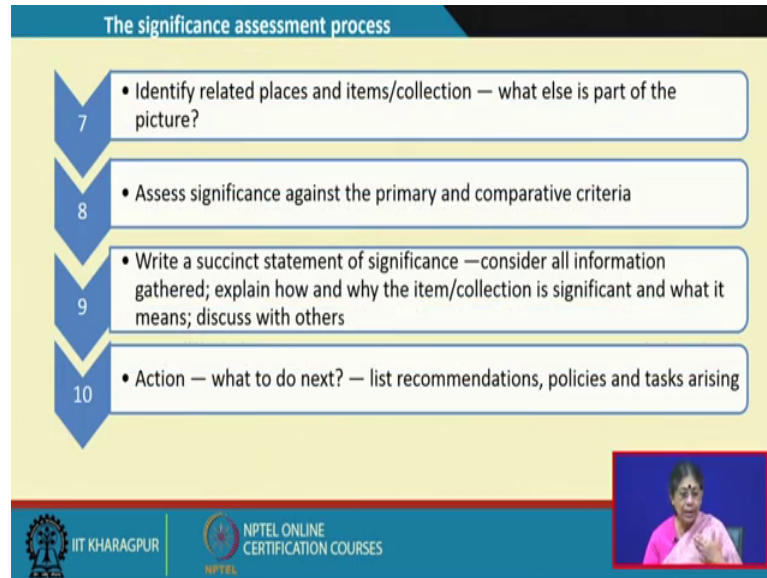


Just to take a recap of the various stages, what we have done we say the significant assessment process first you have to collate a file and then research history and for items the provenance which will discuss in our next lecture, the review the scope and themes arising from the research for collection because themes comes from the understanding and getting the various information then consult the knowledgeable people because it is a very multidisciplinary things people come from various discipline they contribute to the information building. So, consult the knowledgeable people to whom is the item or collection significant and remember it also includes the stakeholder and the community who are very important part because they are the caretakers of the heritage.

Fourth explored the context of the item or collection to what context they belong to consider the patterns development function geography and environment fifth analyze and

describe the fabric and condition of the item or the collection consider nature materials design manufacture the changes which have been taking place and compare with other examples this is very important.

(Refer Slide Time: 22:23)



So, this is the sixth one and the seven then identify the relative places and items of collection what else is the part of the picture there may be something which can be there can be a connectivity between 2 or 3 items or various items in terms of aspects in terms of importance in terms of history in terms of some sort of a peoples association.

And finally, on eight assess a significance against the primary and the comparative criteria after that in the ninth point we have to write assessing statement of significance this is very important and consider all information gathered explain how and why the item of the collection is significant and what is means discuss with others.

So, it has to be a very transparent process and finally, the action what to do the next list recommendation policies and tasks arising, but also I must mention at this stage this statement of significance is just not inventory and there is a difference between these 2. So, we have to know the how to use the criteria we have seen the statement of significance we have sort of a summarize that and then we have to understand that how to use the criteria for the implementation and the action stages.

Thank you.