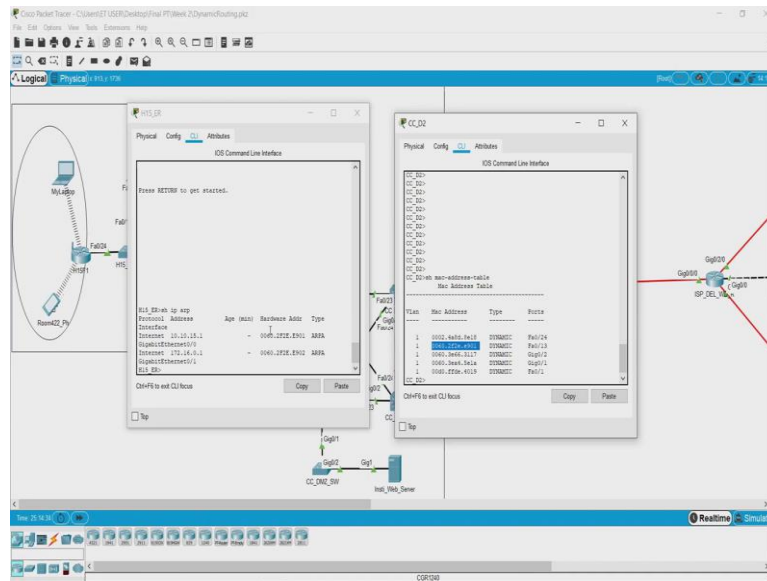




(Refer Slide Time: 00:27)



Now, let us see what devices are connected to the switch by giving the command 'sh mac-address-table'. Now we can see that there are 1, 2, 3, 4, 5 interfaces 1, 2, 3, 4, 5 and then we can also see the corresponding MAC addresses of the those devices which are connected on those ports. For example, on the port 'Fa0/13', a router is connected and the MAC address of that router is this '0060.2f2e.e901'. Similarly, for other interfaces these are the corresponding MAC addresses.

Let us check if we can also we can see that '0060.2f2e.e901', the MAC address is actually here.